

CUSTOM DESIGN



Custom design & engineering

In addition to our standard product line, we are also able to design and manufacture reels that are engineered to meet our customers' specific needs.

Our custom engineered products are developed for demanding applications such as marine, military, aviation, construction, fire fighting, offshore, oil rigs and many more. We offer flexibility, competitive pricing and a strong commitment to aftersales service.

Below are some examples of various build options that we are able to offer. Feel free to contact our experts with your requirements to enable us to specify the correct reel for your application.

Unlimited size and weight

We can build reels to meet almost any size and weight constraints.

No minimum quantities

Order from 1 to as many as you need.

Unique options

Including: Tensioning bars, multiple port fluid paths, specialist finishes such as CARC or marine epoxy coating, level rewind systems and many more.

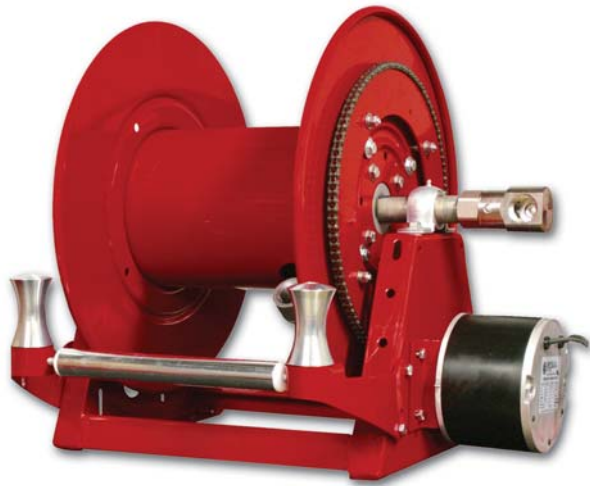
Confidence in our product

You can be confident that the reel we design for you will be built to meet the highest specifications and standards.

Expertise and experience

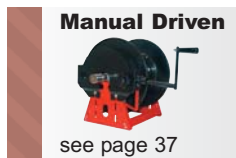
Reelcare have a combined experience of over 50 years in the hose reel industry. Our team of experts are here to discuss your requirements and make sure you get the very best reel for your application.

Drive Options	Drum Width	Thread Size	Thread Type	Thread Style	Fluid Path Material	Pressure (psi)	Inlet Style	Fluid Path location	Colour
12V DC	6" to 36" in 2" increments	12mm - 1/2"	Female outlet	NPT	Aluminium	0-600	Straight	Left hand top wind	Red
24V DC		19mm - 3/4"	Female in/out	BSPP	Ductile Iron	600-1000	90 Degree	Left hand bottom wind	Black
*12V DC		25mm - 1"	Male out	and others	Stainless	1000-3000	1" LPG	Right hand top wind	White
*115V ac		32mm - 1 1/4"	Male in/out		Bronze	3000-5000	1 1/2 LPG	Right hand bottom wind	Grey
*24V dc		38mm - 1 1/2"	Victaulic			5000-6000	2" LPG		Silver
Hydraulic		51mm - 2"				10000			
1 1/2 HP Air		63mm - 2 1/2"				15000			
4 HP Air		75mm - 3"						Finishes	
Bevel Crank		100mm - 4"						Powder Coated	
Hand Crank								Stainless Steel	
Storage							Galvanised		
Cable Reel							Electro coated steel		
							Alluminium		



Comes with chain guard (not shown) as standard

STANDARD VERSIONS ARE AVAILABLE



1200 Series - Compact

1/2", 3/4" or 1" Fluid Path for 1/2" to 1" I.D. Hose

REWIND: Chain and sprocket drive powered by AC or DC electric motor, compressed air motor or hydraulic motor. Auxiliary hand crank is not supplied on motor driven models as standard, but is available on request

INLET: 1/2" up to 1" female 90° swivel assembly as standard. Inline swivel assembly are available on request.

GOOSENECK: 1/2", 3/4", 1" female, other sizes or threads are available and can be supplied when specified.

PRESSURE: Standard pressures to 207 BAR. Reels to operate at -29°C (-20°F) to 107°C (+225°F) other temperatures or pressures can be furnished at extra cost.

FINISH: Available construction in mild steel, stainless steel and polished aluminium.

MAX. HOSE LENGTHS:

1/2" = 213m 3/4" = 107m 1" = 70m

1200 SERIES

SRN Range



2400 Series

1/2", 3/4" or 1" Fluid Path for 1/2" to 1" I.D. Hose

REWIND: Chain and sprocket drive powered by AC or DC electric motor, compressed air motor or hydraulic motor. Auxiliary hand crank is not supplied on motor driven models as standard, but is available on request

INLET: 1/2" up to 1" female 90° swivel assembly as standard. Inline swivel assembly are available on request.

GOOSENECK: 1/2", 3/4", 1" female, other sizes or threads are available and can be supplied when specified.

PRESSURE: Standard pressures to 207 BAR. Reels to operate at -29°C (-20°F) to 107°C (+225°F) other temperatures or pressures can be furnished at extra cost.

MAX. HOSE LENGTHS:

1/2" = 274m 3/4" = 122m 1" = 91m

The **aluminum 2400 Series** reel for booster hose is corrosion-resistant and weighs up to 50% less than standard steel booster reels. Features include an aluminium spool and frame assembly, plated steel fluid path and plated sprocket and fasteners.

2400 SERIES

SRN Range





3900 Series

1-1/2" Fluid Path for 1" to 1-1/2" I.D. Hose

REWIND: Manual reels are either direct or bevel gear drive. Motor driven options are gear drive or chain and sprocket drive, powered by either AC or DC electric motor, air motor or hydraulic motor.

Auxiliary hand cranks are not supplied on power rewind models as standard, but are available on request.

INLET: 1-1/2" female straight inlet is supplied standard, 90° Inlet is available on request.

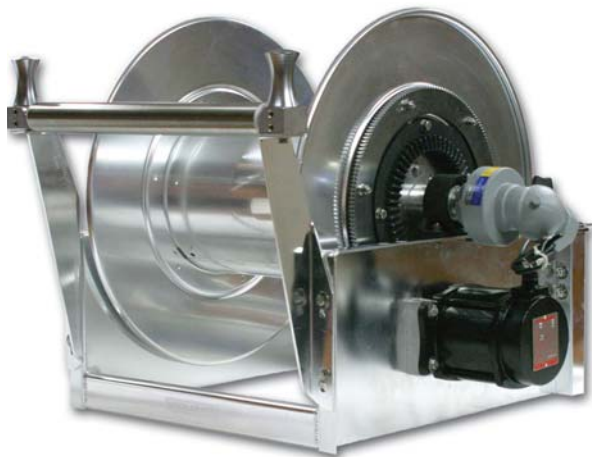
GOOSENECK: 1", 1 1/4" and 1 1/2" female outlet. Other sizes and/or threads available.

PRESSURE: Pressures to 40 BAR. Temperature 79°C (174°F) and minimum temperature -29°C (-20°F). Other pressure and temperatures can be accommodated on request.

APPLICATIONS: The 3900 is particularly well suited to petroleum and fueling industry applications and is generally mounted on refueling vehicles.

3900 SERIES

SRN Range



3900 Series for LPG

1-1/2" or 2" Fluid Path for 1" to 2" I.D. Hose

REWIND: Manual reels are either direct or bevel gear drive. Motor driven options are gear drive or chain and sprocket drive, powered by either AC or DC electric motor, air motor or hydraulic motor.

Auxiliary hand cranks are not supplied on power rewind models as standard, but are available on request.

INLET: Full Circle UL approved swivels available in 1", 1 1/2" and 2" as standard.

PRESSURE: Standard working pressure is 41 BAR (600psi).

FINISH: Available in Stainless steel, Mild steel and polished aluminium.

HOSE BOSS: (Optional extra) The Hose Boss™ Rewind Assist consists of a rewind switch mounted in an extended arm with two hose rollers. Assists in efficiently and safely unwinding and rewinding hose.



3900 SERIES for LPG

SRN Range





3700 Series

2" Fluid Path for 1-1/2" to 2" Hose

REWIND: Manual reels are bevel gear drive. Motor driven options are gear drive or chain and sprocket drive, powered by either AC or DC electric motor, air motor or hydraulic motor.

Auxiliary hand cranks are not supplied on power rewind models as standard, but are available on request.

INLET: 2" male is standard.

GOOSENECK: 2" female or male. Other sizes and/or threads can be supplied and must be specified.

FINISH: The standard colour for this series is red or grey. The 3700 is also available in stainless steel.

PRESSURE: Standard pressures to 20 BAR (300 p.s.i.) Other temperatures or pressures are available if required.

APPLICATIONS: The 3900's large bore is particularly well suited to applications that require large volume delivery of medias such as diesel, water, effluent etc.

3700 SERIES

SRN Range



5900 Series

3" or 4" Fluid Path for 2" to 4" I.D. Hose

REWIND: Manual reels are bevel gear drive. Motor driven options are gear drive or chain and sprocket drive, powered by either AC or DC electric motor, air motor or hydraulic motor.

Auxiliary hand cranks are not supplied on power rewind models as standard, but are available on request.

INLET: 3" or 4" (Type on application)

GOOSENECK: 3" or 4" female. Other sizes and/or threads can be supplied and must be specified when ordering.

DRUM: 24" (610mm) diameter drums are standard on 4" reels

FINISH: The standard colour for this series is red or grey. The 5900 is also available in stainless steel.

PRESSURE: Standard pressures to 20 BAR (300 p.s.i.) Other temperatures or pressures are available if required.

5900 SERIES

SRN Range





6000 Series

1½", 2" or 3" Fluid Path for 1½" to 3" I.D. Hose

REWIND: Chain and sprocket drive powered by AC or DC electric motor, compressed air motor or hydraulic motor.

INLET: 2" male is standard. 90° inlets can be supplied on request.

GOOSENECK: 1½" 2" or 3" female is available.

BRAKES & LOCKS: Air operated caliper brake and idler assembly is standard. Manual friction brake optional.

MATERIALS: Standard frame and spool assembly are of heavy duty steel construction. Also available in aluminium.

APPLICATIONS: This reel has been designed for the Petroleum and Aviation markets and is generally used on refueling vehicles

Please note that these reels are custom built and the information given is to provide you with basic parameters. Please call our consultants with full details of your application so we can provide you with the correct part number.

6000 SERIES

SRN Range



3800 Series - inverted

1-½" or 2" Fluid Path for 1-¼" to 2" I.D. Hose

REWIND: Chain and sprocket drive powered by AC or DC electric motor, compressed air motor or hydraulic motor.

INLET: 1½" female inlet as standard. Other inlets and thread sizes can be supplied on request.

GOOSENECK: 1¼", 1½" or 2" female. Other sizes and/or threads can be supplied on request..

FINISH: Powder coated steel construction. The standard colour for this series is red or grey.

PRESSURE: Standard pressures to (20 BAR) 300 p.s.i. Other temperatures or pressures are available if required.

BRAKES & LOCKS: Manual friction brake as standard. Air operated caliper brake can be supplied on request.

CUSTOM DESIGN

SRN Range





T SERIES

CT Range



Transport / Refueling / Fire Fighting / Industrial Reels

Rewind Systems

- Hand crank
- Bevel crank
- 12 VDC
- 24 VDC
- 110 VAC
- 240 VAC / 415 VAC
- Hydraulic
- Pneumatic

Options

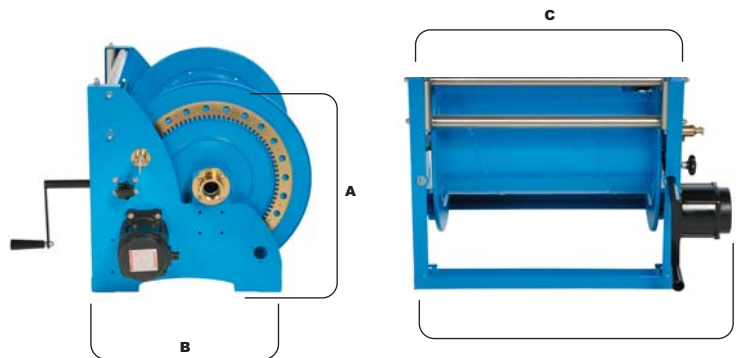
- Friction brake
- Pin lock
- Colour code
- Aux bevel crank
- RH & LH drives
- Top or bottom wind

HOSE CAPACITY	3/4"	1"	1-1/4"	1-1/2"
Meters	130	120	80	60
Working pressures 800psi/55Bar optional 10000psi/690bar				

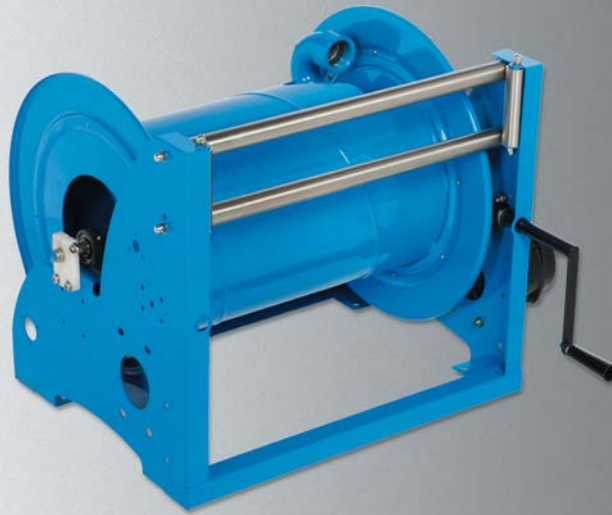
The following models are listed for your convenience, other variations available on request. The listed capacities are based on a standard drum diameter of 278-mm OD.

Construction Materials

- Mild Steel
- Aluminium
- Stainless steel



MODELS with hose	HOSE CAPACITY				DIMENSIONS			
	3/4"	1"	1-1/4"	1-1/2"	A	B	C	G
T480410-001	30	15	0	0	612	552	535	Hand crank
T480510-001	35	20	0	0	612	552	635	C + 170
T580310-001	35	30	20	15	660	620	435	Bevel Crank
T580460-001	50	35	30	25	660	620	585	C + 75
T580640-001	75	60	35	30	660	620	765	12/24 VDC
T580710-001	80	75	45	40	660	620	835	C + 178
T580920-001	120	100	60	55	660	620	1045	Hydraulic
T640310-001	35	30	25	15	700	680	435	C + 172
T640510-001	60	50	45	30	700	680	635	Pneumatic
T780410-001	100	90	60	50	800	820	535	C + 110
T780510-001	130	120	80	60	800	820	635	



T SERIES

CT Range



Transport / Refueling / Fire Fighting / Industrial Reels

Rewind Systems

Hand crank
 Bevel crank
 12 VDC
 24 VDC
 110 VAC
 240 VAC / 415 VAC
 Hydraulic
 Pneumatic

Options

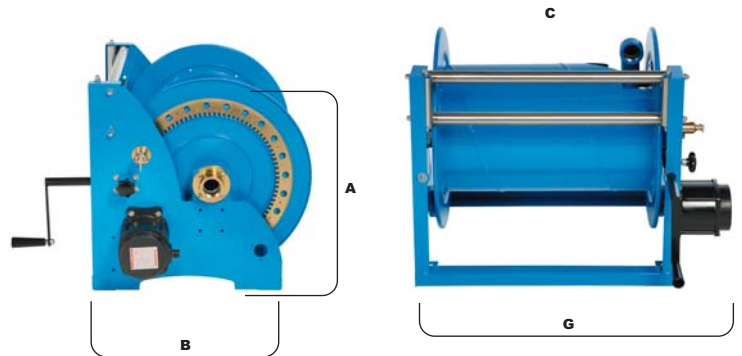
Friction brake
 Pin lock
 Colour code
 Aux bevel crank
 RH & LH drives
 Top or bottom wind

HOSE CAPACITY	1-1/2"	2"
	Meters	100
Working pressures 800psi/55Bar optional 10000psi/690bar		

The following models are listed for your convenience, other variations available on request. The listed capacities are based on a standard drum diameter of 405-mm OD.

Construction Materials

Mild Steel
 Aluminum
 Stainless steel



MODELS with hose	HOSE CAPACITY		DIMENSIONS				
	1-1/2"	2"	A	B	C	G	
T640510-001	20	15	700	680	635		Hand crank
T640610-001	25	20	700	680	635		C + 170
T640820-001	35	25	700	680	945		Bevel Crank
T780510-001	50	30	800	820	635		C + 75
T780660-001	65	40	800	820	785		12/24 VDC
T990410-001	70	45	1000	1020	535		C + 178
T990610-001	110	65	1000	1020	735		Hydraulic
							C + 172
							Pneumatic
							C + 110