

## GEN iii SERIES

SG Range



### Corrosion proof composite material

The GEN iii is a durable yet economical reel, lightweight and easy to operate. The GEN iii has been designed to meet the harsh demands of industrial environments and is manufactured from corrosion proof, composite materials for continuous, trouble-free operation.



### FEATURES & BENEFITS

#### High Quality Finished Edge Spring

The GEN iii boasts a high quality roll formed drive spring which virtually eliminates the possibility of drive spring failure due to micro cracks which occur on standard slit edge drive springs used on many hose reels.

#### Full Flow Heavy Duty Swivel

The heavy duty swivel reduces possible cracking in freezing conditions and allows us to offer full flow fluid paths for maximum media flow rates.

#### Multi Position Locking Mechanism

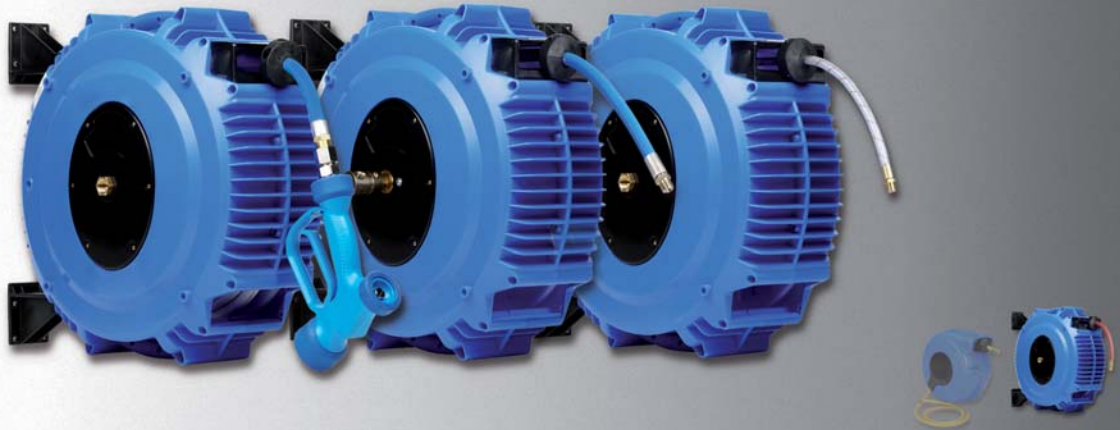
The GEN iii has a unique multi position locking mechanism that provides a complete, positive retraction every time.

#### Composite Materials

The GEN iii is manufactured from tough, impact & corrosion resistant UV stabilised polypropylene with added anti-static and flame retardants.

MODELS	I.D.		LENGTH		PRESSURE		CONNECTION		WEIGHT	
	with hose	mm	inch	m	ft	Bar	PSI	inlet		outlet
<b>Low Pressure Air &amp; Water</b>										
AW815-001		8	5/16	15	50	17	240	3/8"	3/8"	11Kg
AW820-001		8	5/16	20	66	17	240	3/8"	3/8"	12Kg
AW1015-001		10	3/8	15	50	17	240	3/8"	3/8"	12Kg
AW1020-001		10	3/8	20	20	17	240	3/8"	3/8"	12Kg
AW1215-001		12	1/2	15	50	17	240	1/2"	1/2"	12Kg
AW1218-001		12	1/2	18	60	17	240	1/2"	1/2"	12Kg
<b>DIMENSIONS SG RANGE W 239 mm L 559 mm H 490 mm</b>										

See page 32 for oxy/acetylene reels



## GEN iii SERIES

SG Range



### Hotwash Reels

GEN iii hotwash reels are specifically designed as the perfect solution for hot water washdown applications in food preparation areas. The blue food grade hose is acceptable for food processing areas for hot or cold water washdown. The stain and chemical resistant engineered composite construction allow the reel to be easily washed and hygienically cleaned as and when required.

### Food Gas Reels

Food gas reels are designed for use in wineries to dispense CO<sub>2</sub> and/or Nitrogen gases to blanket the vats and tanks during transfer, storage, fermentation and other processes. Also suited to other food processing industries that require inert gas transfer.

### Pesticide Reels

The GEN iii chemical series offers a lightweight corrosion proof solution for the dispensing of herbicides and pesticides.



MODELS with hose	I.D.		LENGTH		PRESSURE		CONNECTION		WEIGHT kg
	mm	inch	m	ft	Bar	PSI	inlet	outlet	
<b>Hotwash</b>									
HW1015-001	10	3/8	15	50	17	240	3/8	3/8	10
HW1020-001	10	3/8	20	66	17	240	3/8	3/8	12
HW1215-001	12	1/2	15	50	17	240	1/2	1/2	12
<b>Food Gases</b>									
FD820-001	8	5/16	20	66	17	240	3/8	3/8	12
FD1020-001	10	3/8	20	66	17	240	3/8	3/8	12
<b>Chemicals</b>									
WP1015-001	10	3/8	15	50	17	240	3/8	3/8	12
WP1215-001	12	1/2	15	50	17	240	3/8	3/8	12
WP1020-001	10	3/8	20	66	17	240	3/8	3/8	12
<b>DIMENSIONS SG RANGE W 239 mm L 559 mm H 490 mm</b>									

See page 30 for pressure wash reels



## GEN iii SERIES

## SG Range



### Breathing Air Reels

GEN iii breathing air reels are ideally suited for supplying breathing grade air to air fed respirators to better manage the supply hose making it safer for the operator particularly in confined work areas.

\*Hose assemblies meet EN139 standard.

### Lubrication Reels

Lubrication reels are the ideal solution for light duty oil and grease transfer applications.

### Garden Reels

The garden reel is the perfect solution to keep your garden looking great. No more tangles or having to fight the hose every time you water the garden or wash the car. The reel comes complete with a 2-m side connection hose and inlet fitting.

### Barrier Reels

Fitted with 20 metres of 50mm wide woven webbing (safety orange) the barrier reel is the ideal way to quickly & efficiently set up personnel safety barriers for areas that require regular guarding.



MODELS	I.D.		LENGTH		PRESSURE		CONNECTION		WEIGHT
	with hose	mm	inch	m	ft	Bar	PSI	inlet	

#### Breathing Air\*

BD820-001	8	5/16	20	66	17	240	3/8	3/8	10
BD1020-001	10	3/8	20	66	17	240	3/8	3/8	12

#### Lubrication Reels

OL1015-001 (oil)	10	3/8	15	50	82	1200	3/8	3/8	12
OL1210-001 (oil)	12	1/2	10	33	82	1200	1/2	1/2	12
GR615-001 (grease)	6	1/4	15	50	344	5000	1/4	1/4	12

#### Garden Reels

G1218-001	12	1/2	18	60	10	150	1/2	1/2	12
-----------	----	-----	----	----	----	-----	-----	-----	----

#### Barrier Reel

MODELS	WEBBING WIDTH	WEBBING LENGTH	END FITTING	WEIGHT
BAR5020-001	50mm	20m	Sewn Loop	12

**DIMENSIONS SG RANGE** W 239 mm L 559 mm H 490 mm

See page 27 for cable reels



## GEN IV SERIES

SG Range



### Corrosion proof composite material

The GEN IV is the ideal solution for small to medium workshop applications, where the size of the reel is important or short hose lengths are all that is required. The GEN IV is manufactured from tough corrosion proof composite materials and extensive tests have shown it to be highly resistant to the vast majority of acids and alkalis. Typical uses for the GEN IV are: service vans, under bench applications, assembly lines, etc. Each GEN IV is supplied complete with a 1.5m connection hose.



### FEATURES & BENEFITS

#### High Quality Finished Edge Spring

The GEN IV boasts a high quality finished edge drive spring which virtually eliminates the possibility of drive spring failure due to micro cracks which occur on standard slit edge drive springs used on many hose reels.

#### Multi Position Locking Mechanism

The GEN IV has a multi position locking mechanism which, when released, provides a complete, positive retraction every time.

#### Modern Composite Materials

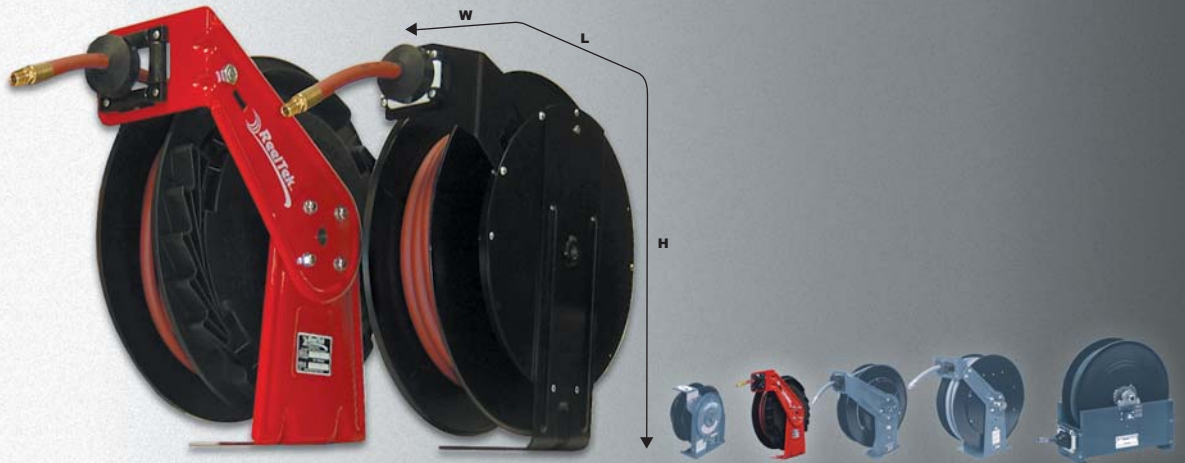
Manufactured from high grade virgin materials ensuring strength and longevity. UV stabilisers are added to offer extra protection against UV light reducing the possibility of hardening and cracking.

#### Mounting Brackets & Bosses

The three piece mounting system enables the reel to be attached and detached while the wall plate stays fitted in place.

MODELS	I.D.		LENGTH		PRESSURE		CONNECTION		WEIGHT	
	with hose	mm	inch	m	ft	Bar	PSI	inlet		outlet
<b>Low Pressure Air &amp; Water</b>										
GP612		6	1/4	12	40	17	240	1/4	1/4	7.5
GP812		8	5/16	12	40	17	240	3/8	3/8	7.5
GP1010		10	3/8	10	32	17	240	3/8	3/8	7.5
<b>DIMENSIONS SG RANGE</b> W 185 mm L 431 mm H 342 mm										

See page 27 for cable reels



## Reeltek & K SERIES

SR Range



### Economical solutions

Economical and ideal for applications that require an industrial standard product at a reasonable price level. The K Series low pressure hose reels are for use with air or water only. Both reels have high quality latch mechanisms the provide ease of use and durability. The K Series is suitable for all low pressure air and water applications. The Reeltek is also available in medium and high pressure versions for use with oil and grease respectively.

**Green Reeltek nitrogen reels available, call for details**



MODELS	I.D.		O.D.	LENGTH		PRESSURE		CONNECTION		WEIGHT	DIMENSIONS			
	with hose	mm		inch	mm	m	ft	Bar	PSI		inlet	outlet	kg	W
K435LP		6	1/4	11	11	35	21	300	3/8	1/4	7.25	381	168	432
K635LP		10	3/8	15	11	35	21	300	3/8	1/4	7.4	451	168	476
K650LP		10	3/8	15	15	50	21	300	3/8	1/4	12.4	451	168	476
K835LP		12	1/2	11	11	35	21	300	3/8	1/2	12.5	451	168	476
K850LP		12	1/2	15	15	50	21	300	3/8	1/2	13.4	451	168	476

### REELTEK - Low Pressure Air & Water

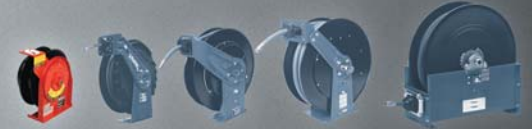
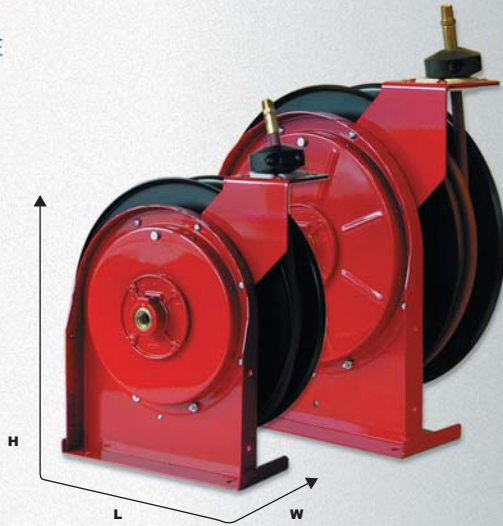
RT425 OLP	6	1/4	13	7.5	25	21	300	3/8	1/4	10	140	419	454
RT435 OLP	6	1/4	13	11	35	21	300	3/8	1/4	11	140	419	454
RT450 OLP	6	1/4	13	15	50	21	300	3/8	1/4	12	140	419	454
RT635 OLP	10	3/8	16	11	35	21	300	3/8	1/4	11	140	419	454
RT650 OLP	10	3/8	16	15	50	21	300	3/8	1/4	14	159	419	454
RT835 OLP	12	1/2	20	11	35	21	300	1/2	1/2	14	159	419	454
RT850 OLP	12	1/2	20	15	50	21	300	1/2	1/2	16	197	419	454

### REELTEK - Medium Pressure Air, Water & Oil

RT635 OMP	10	3/8	16	11	35	69	1000	3/8	3/8	14	140	419	454
RT835 OMP	12	1/2	21	11	35	69	1000	1/2	1/2	16	159	419	454

### REELTEK - High Pressure Grease

RT435 OHP	6	1/4	15	11	35	345	5000	3/8	1/4	15	140	419	454
RT635 OHP	10	3/8	19	11	35	276	4000	1/2	3/8	16	159	419	454



## 4000/5000 SERIES SR Range



### Compact, durable & versatile

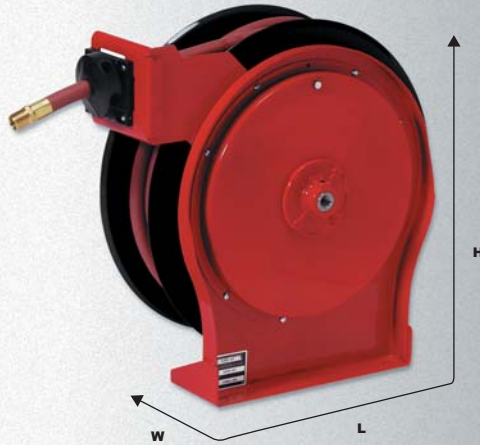
The 4000 & 5000 Series hose reels are durable and compact and used for a wide variety of applications where space requirements are critical. A full flow shaft and swivel assembly assures maximum product delivery. The standard low pressure hose reel is for air or water service only. The medium and high pressure reels are for oil and grease respectively.

Consult Reelcare if you are unsure of your application, the sales department are there to help and will be more than happy to advise.



MODELS	I.D.		O.D.		LENGTH		PRESSURE		CONNECTION		WEIGHT	MODELS	PRESSURE		WEIGHT
with hose	mm	inch	mm	mm	m	ft	Bar	PSI	inlet	outlet	with hose	without hose	Bar	PSI	without hose
<b>4000 Low Pressure Air &amp; Water</b>															
4420 OLP118	6	1/4	13	6	20	21	300	3/8	1/4	9	4400 OLP118	35	500	8	
4425 OLP118	6	1/4	13	7.5	25	21	300	3/8	1/4	9	4400 OLP118	35	500	8	
4435 OLP118	6	1/4	13	11	35	21	300	3/8	1/4	10	4400 OLP118	35	500	8	
4617 OLP118	10	3/8	16	5	17	21	300	3/8	1/4	9	4600 OLP118	35	500	8	
4625 OLP118	10	3/8	16	8	25	21	300	3/8	1/4	9	4600 OLP118	35	500	8	
<b>5000 Low Pressure Air &amp; Water</b>															
5450 OLP118	6	1/4	14	15	50	21	300	3/8	1/4	12	5400 OLP118	35	500	9	
5635 OLP118	10	3/8	16	11	35	21	300	3/8	1/4	11	5600 OLP118	35	500	10	
A5825 OLP118	12	1/2	20	8	25	21	300	3/8	1/2	14	A5800 OLP118	35	500	10	
<b>5000 Medium Pressure Air, Water &amp; Oil</b>															
5435 OMP118	6	1/4	15	11	35	190	2750	3/8	1/4	14	5400 OMP118	207	3000	20	
5630 OMP118	10	3/8	20	9	30	155	2250	3/8	3/8	14	5600 OMP118	207	3000	21	
<b>5000 High Pressure Grease</b>															
5430 OHP118	6	1/4	15	9	30	345	5000	1/4	1/4	14	5400 OHP118	345	5000	12	
5625 OHP118	10	3/8	20	7.5	25	276	4000	1/4	1/4	14	5600 OHP118	345	5000	12	
<b>DIMENSIONS 4000 W 136 mm L 321 mm H 327 mm</b>															
<b>DIMENSIONS 5000 W 152 mm L 343 mm H 368 mm</b>															

Also available for welding pg32, twin hydraulic pg33, cable pg26 and in stainless steel pg24



## 5005 SERIES

## SR Range



### Compact, durable & versatile

The 5005 Series is similar to the 4000 and 5000 Series except it handles longer hose lengths up to 15 metres. The quiet speed latch mechanism offers quiet operation combined with latch cam technology insuring longer latching life and trouble free performance. Reels are all-steel construction and compact for applications with critical space requirements. The medium pressure reels can be used for air, water and oil respectively.

Consult Reelcare if you are unsure; the sales department are there to help and will be more than happy to advise.



- ▶ Industrial
- ▶ Automotive Centres
- ▶ Garages
- ▶ Service Vehicles
- ▶ Farms/Agricultural
- ▶ Fleet Maintenance
- ▶ Woodworking
- ▶ Work Shop
- ▶ Aircraft Maintenance
- ▶ Pneumatic Tools
- ▶ Assembly Lines and many more

MODELS	I.D.		O.D.	LENGTH		PRESSURE		CONNECTION		WEIGHT	MODELS	PRESSURE		WEIGHT
	with hose	mm		inch	mm	m	ft	Bar	PSI			inlet	outlet	

### 5005 Low Pressure Air & Water

5650 OLP118	10	3/8	16	15	50	21	300	3/8	1/4	14	5605 OLP118	35	500	12
A5835 OLP118	12	1/2	20	11	35	21	300	1/2	3/8	18	A5805 OLP118	35	500	15
A5850 OLP118	12	1/2	20	15	50	21	300	3/8	1/2	20	A5806 OLP118	35	500	15

### 5005 Medium Pressure Air, Water & Oil

A5835 OMP118	12	1/2	21	11	35	138	2000	3/8	1/2	19	A5805 OMP118	207	3000	14
--------------	----	-----	----	----	----	-----	------	-----	-----	----	--------------	-----	------	----

**DIMENSIONS 5005** W 152 mm L 419 mm H 445 mm

**DIMENSIONS 5006** W 178 mm L 419 mm H 445 mm



## 7000 SERIES

## SR Range



### Designed for a variety of industrial applications

7000 Series is an extremely robust range of hose reels and is ideal for the most demanding of applications. The base and the guide arm are formed from high-grade pressed steel and the engineered structural forms within these parts give the 7000 Series its strength. The standard low pressure hose reel is for air or water service only. The medium and high pressure reels are for oil and grease respectively.

The 7000 Series is our most versatile reel because of its durability and the range of applications it is suitable for.



MODELS	I.D.		O.D.		LENGTH		PRESSURE		CONNECTION		WEIGHT	MODEL	PRESSURE		WEIGHT
with hose	mm	inch	mm	mm	m	ft	Bar	PSI	inlet	outlet	with hose	without hose	Bar	PSI	without hose

### Low Pressure Air & Water

7650 OLP118	10	3/8	17	15	50	21	300	1/2	1/4	21	7600 OLP118	35	500	18
7670 OLP118	10	3/8	17	20	70	21	300	1/2	1/4	23	7600 OLP118	35	500	18
7850 OLP118	12	1/2	22	15	50	21	300	1/2	3/8	23	7800 OLP118	35	500	20
7925 OLP118	19	3/4	30	7.5	25	18	250	3/4	3/4	24	7900 OLP118	35	500	20

### Medium Pressure Air, Water & Oil

7650 OMP118	10	3/8	18	15	50	155	2250	1/2	1/2	25	7600 OMP118	207	3000	19
7660 OMP55 118	10	3/8	18	18	60	155	2250	1/2	1/2	25	7600 OMP55-118	207	3000	19
7850 OMP118	12	1/2	21	15	50	138	2000	1/2	1/2	26	7800 OMP118	207	3000	20

### High Pressure Grease

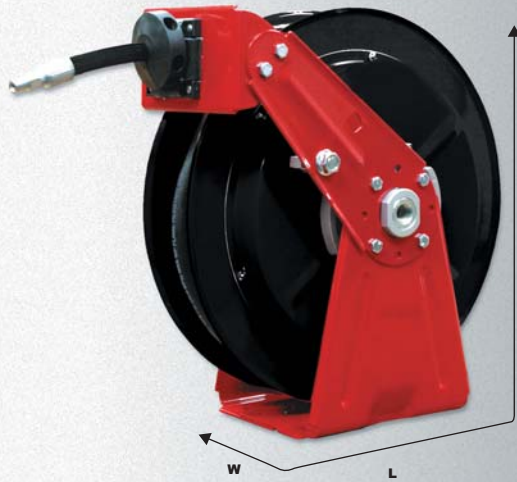
7450 OHP118	6	1/4	17	15	50	345	5000	1/2	1/4	26	7400 OHP118	345	5000	20
7650 OHP118	10	3/8	19	15	50	276	4000	1/2	1/4	26	7600 OHP118	345	5000	21

### High Pressure Wash Reels (see page 30 for more models)

PW7650OHP118	10	3/8	19	15	50	311	4500	1/2	1/2	26	PW7600 OHP118	311	4500	21
--------------	----	-----	----	----	----	-----	------	-----	-----	----	---------------	-----	------	----

**DIMENSIONS 7000** W 146 mm L 483 mm H 514 mm

Available for - fuel pg31 - welding pg32 - twin hydraulic pg33 - stainless steel pg24



## DP7000 SERIES

SR Range



### Heavy duty reel with unique dual pedestal design

DP7000 Series is a breakthrough in dual pedestal hose reel design, Reelcare are able to offer the stability of a dual pedestal hose reel in a strong, superbly engineered and extremely compact design. The DP7000 Series features a patent pending interlocking base design, that makes the base assembly especially strong and resistant to heavy vibration. Independent testing has proven the DP7000 Series will stand up to rigorous truck or vehicle mounted applications.

### FEATURES & BENEFITS

#### Strength & Stability

Interlocking dual base and guide arms are pressed from heavy gauge industrial steel and engineered components throughout make these reels strong and vibration resistant.

#### Lightweight

Latch pawl, cam, and hubs are die-cast aluminium for superior strength and to eliminate excessive weight.

#### Superior Corrosion-Resistance

A double adhesive gasket seals the spring case and steel parts are powder coated to provide excellent protection against weathering.

#### Low Maintenance

Permanent oil impregnated bronze bushing and stainless steel torsion spring are incorporated to ensure that, through frequent use, these reels require minimal maintenance.

#### Ease of Operation

The latch pawl is mounted on the guide arm to prevent lock out at full extension.

MODELS	I.D.		O.D.	LENGTH		PRESSURE		CONNECTION		WEIGHT	MODELS	PRESSURE		WEIGHT
with hose	mm	inch	mm	m	ft	Bar	PSI	inlet	outlet	with hose	without hose	Bar	PSI	without hose

#### Low Pressure Air & Water

DP7450 OLP118	6	1/4	13	15	50	20	300	1/2	1/4	21	DP7400 OLP118	35	500	19
DP7650 OLP118	10	3/8	17	15	50	20	300	1/2	1/4	22	DP7600 OLP118	35	500	19
DP7850 OLP118	12	1/2	22	15	50	20	300	1/2	1/2	23	DP7800 OLP118	35	500	20

#### Medium Pressure Air, Water & Oil

DP7650 OMP118	10	3/8	18	15	50	155	2250	1/2	3/8	25	DP7600 OMP118	207	3000	19
DP7850 OMP118	12	1/2	22	15	50	138	2000	1/2	1/2	26	DP7800 OMP118	207	3000	21

#### High Pressure Grease

DP7450 OHP118	6	1/4	17	15	50	345	5000	1/2	1/4	26	DP7400 OHP118	345	5000	20
DP7650 OHP118	10	3/8	19	15	50	276	4000	1/2	1/4	27	DP7600 OHP118	345	5000	21

**DIMENSIONS DP7400 & DP7600** W 203 mm L 419 mm H 432 mm

**DIMENSIONS DP7800** W 229 mm L 419 mm H 432 mm



## 80000/D80000 SERIES

SR Range



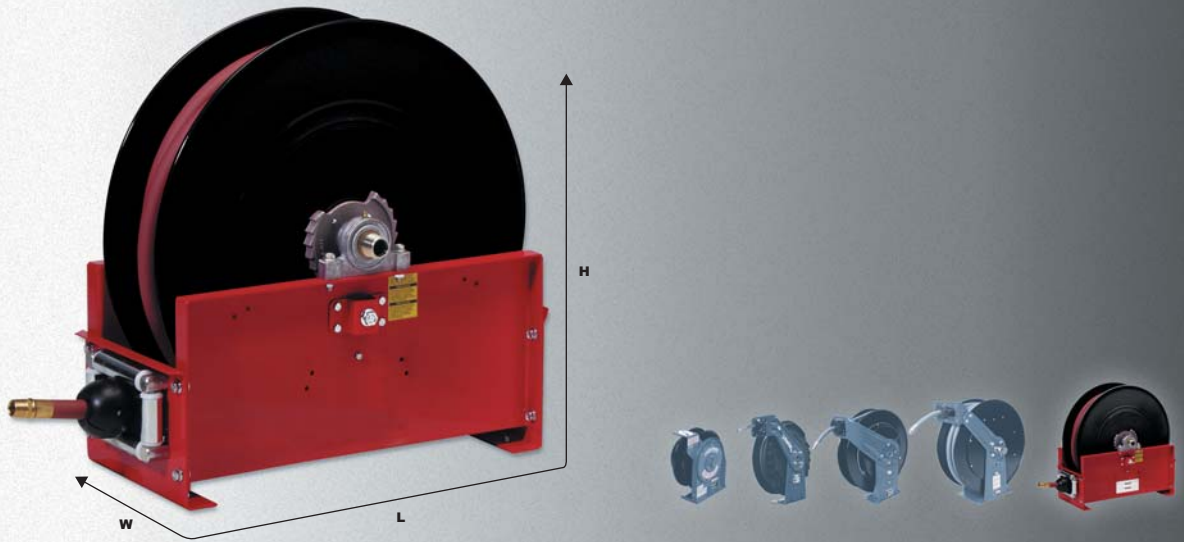
### Heavy duty reel with a dual pedestal design

Reelcare's 80000 & D80000 spring retractable hose reels incorporate contemporary design and manufacturing techniques to guarantee long life and trouble free performance. To reduce maintenance and extend the working life, this reel has a unique five-in-one aluminium casting that comprises the main shaft, the latch & ratchet mechanism, the spring arbour and the goose neck. The all-steel frame and drum construction with baked-on polyester powder coat finish combine to produce a rugged corrosion resistant product suitable for a wide variety of heavy duty applications. A four position guide arm allows wall, floor, ceiling or pit mounting. The 80000 & D80000 come with the option of left or right hand inlet.



MODELS	I.D.		O.D.	LENGTH		PRESSURE		CONNECTION		WEIGHT	MODELS	PRESSURE		WEIGHT
with hose	mm	inch	mm	m	ft	Bar	PSI	inlet	outlet	with hose	without hose	Bar	PSI	without hose
<b>Low Pressure Air &amp; Water</b>														
81100 OLP118	10	3/8	18	30	100	21	300	1/2	3/8	42	81000 OLP118	35	500	35
82075 OLP118	12	1/2	22	23	75	21	300	1/2	1/2	40	82000 OLP118	35	500	35
82100 OLP118	12	1/2	22	30	100	21	300	1/2	1/2	46	82000 OLP118	35	500	35
83050 OLP118	19	3/4	31	15	50	17	250	3/4	3/4	45	83000 OLP118	35	500	35
D83075 OLP118	19	3/4	31	23	75	17	250	3/4	3/4	51	D83000 OLP118	35	500	38
D84050 OLP118	25	1	35	15	50	17	250	1	1	55	D84000 OLP118	35	500	38
<b>Medium Pressure Air, Water &amp; Oil</b>														
82075 OMP118	12	1/2	21	23	75	138	2000	1/2	1/2	45	82000 OMP118	138	2000	35
83050 OMP118	19	3/4	31	15	50	86	1250	3/4	3/4	44	83000 OMP118	104	1500	35
<b>High Pressure Grease</b>														
81075 OHP118	10	3/8	18	23	75	276	4000	1/2	3/8	55	81000 OHP118	345	5000	35
81100 OHP118	10	3/8	18	30	100	276	4000	1/2	3/8	58	81000 OHP118	345	5000	35
<b>High Pressure Wash Reels</b>														
PW81100 OHP118	10	3/8	18	30	100	311	4500	1/2	3/8	52	PW81000 OHP118	345	5000	37
<b>DIMENSIONS 80000 W 267 mm L 610 mm H 645 mm</b>														
<b>DIMENSIONS D80000 W 362 mm L 610 mm H 645 mm</b>														

Available for - fuel pg31 - welding pg32 - twin hydraulic pg33 - stainless steel pg24



## 9000 SERIES

## SR Range



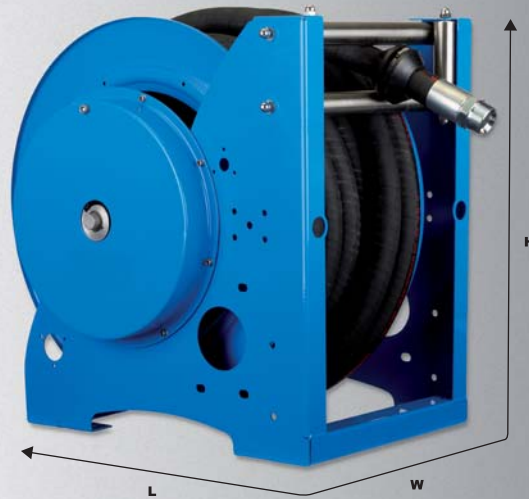
### Unique base design for maximum stability

The 9000 Series base design offers complete stability no matter what the application. The range is suitable for high volume air, water, fuel and petroleum applications. The design makes it ideal for service vehicles, permanent service or plant work areas. The standard low pressure hose reels are for air or water service only. The medium and high pressure reels are for air, water, oil and grease respectively. Consult Reelcare if you are unsure of your application, the sales department are there to help and will be more than happy to advise.



MODELS	I.D.		O.D.	LENGTH		PRESSURE		CONNECTION		WEIGHT	MODELS	PRESSURE		WEIGHT	
	with hose	mm		inch	mm	m	ft	Bar	PSI			inlet	outlet		with hose
<b>Low Pressure Air &amp; Water</b>															
D9299 OLP118	12	1/2	21	30	100	20	300	1/2	1/2	58	D9200 OLP118	35	500	52	
D9350 OLP118	19	3/4	30	15	50	20	300	3/4	3/4	64	D9300 OLP118	35	500	52	
D9399 OLP118	19	3/4	30	30	100	20	300	3/4	3/4	65	D9305 OLP118	35	500	52	
D9450 OLP118	25	1	38	15	50	20	300	1	1	70	D9400 OLP118	35	500	52	
<b>Medium Pressure Air, Water &amp; Oil</b>															
D9275 OMP118	12	1/2	22	23	75	138	2000	1/2	1/2	63	D9200 OMP118	207	3000	52	
D9350 OMP118	19	3/4	32	15	50	86	1250	3/4	3/4	65	D9300 OMP118	207	3000	52	
<b>High Pressure Grease</b>															
D9175 OHP118	10	3/8	19	23	75	276	4000	3/8	1/2	65	D9100 OHP118	345	5000	52	
<b>DIMENSIONS D9000 W 400 mm L 667 mm H 667 mm</b>															

Available for - fuel pg31 - stainless steel pg24



## ST SERIES

CT Range



### Heavy Duty Spring Rewinding Reels

The ST series of spring rewind reels offers long hose lengths and large diameters in a rugged design for Heavy Duty applications. Built around the platform of the very successful ReCoila T series manual and motor driven reels the ST series performs to customers expectations.

Applications include, air, water, fuels, lubricants, chemicals for diverse industries including mining, offshore, service vehicles, workshops – anywhere a rugged reliable spring rewind reel is required for large diameter and long length hoses.

Standard units are powder coated steel and are also available in stainless steel and aluminium construction. Dual hose and high pressure versions are available.

The T Series is custom built to your specification and available for a wide range of fluids and gasses including but not limited to air, water, oil, grease, fuel oxy/acetylene, dual hydraulic hose.



- ▶ Industrial
- ▶ Service Vehicles
- ▶ Woodworking
- ▶ Pneumatic Tools
- ▶ Automotive Centres
- ▶ Farms/Agricultural
- ▶ Work Shop
- ▶ Assembly Lines
- ▶ Garages
- ▶ Fleet Maintenance
- ▶ Aircraft Maintenance
- ▶ and many more

HOSE CAPACITY	19mm	25mm	32mm	38mm	50mm	Twin hose 19mm
Meters	30	30	25	20	10	30

Working pressures 800psi/55Bar optional 10000psi/690bar



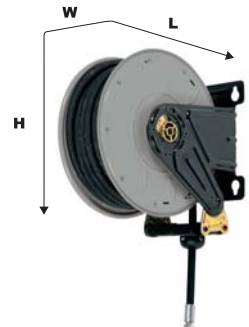
## 270/300/350/430 SERIES SE Range



### Compact Duty

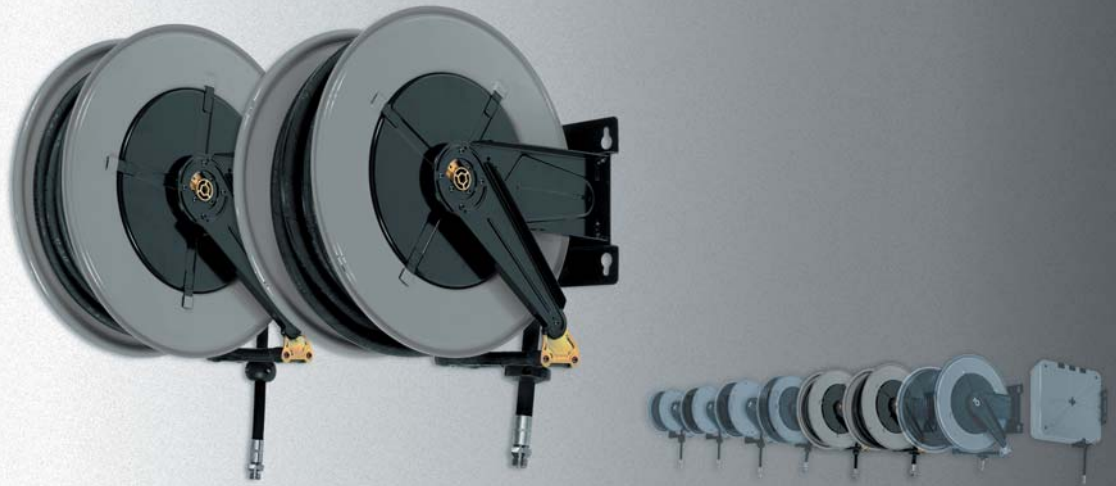
The SE Range of spring driven hose reels represents outstanding value for money. This is an extremely durable range of high quality steel hose reels. The 270, 300, 350 & 430 Series suit hose sizes ranging from 6mm I.D. (1/4") up to 12mm I.D. (1/2"). The SE Range is available with or without hose and is suitable for numerous applications.

- ▶ Full Flow Swivel
- ▶ Adjustable Guide Arm
- ▶ Enclosed Drive Spring
- ▶ Powder Coated Steel
- ▶ Easy Installation



MODELS	MODELS	I.D.	O.D.	LENGTH	PRESSURE	CONNECTION	WEIGHT	DIMENSIONS						
with hose	without hose	mm	inch	mm	m	ft	Bar	PSI	inlet	outlet	kg	W	L	H
<b>Low Pressure Air &amp; Water</b>														
	SE270-10	10	3/8	16	15	50	20	300	3/8	3/8	7	186	320	310
SE270-11		10	3/8	16	10	35	20	300	3/8	3/8	8.5	186	320	310
SE270-12		10	3/8	14	13	42	20	300	3/8	3/8	10	186	320	310
SE270-13		8	5/16	14	15	50	20	300	3/8	1/4	12	186	320	310
	SE300-10	10	3/8	16	12	40	20	300	3/8	3/8	8	186	355	365
SE300-11		10	3/8	16	12	40	20	300	3/8	3/8	10	186	355	365
	SE350-10	10	3/8	16	18	60	20	300	3/8	3/8	10	186	410	400
SE350-11		10	3/8	16	18	60	20	300	3/8	3/8	12	186	410	400
	SE430-10	12	1/2	19	15	50	20	300	1/2	1/2	14	186	460	450
SE430-11		12	1/2	19	15	50	20	300	1/2	1/2	19	186	460	450
<b>Medium Pressure Hot Water 130°C</b>														
	SE300-20	10	3/8	16	12	40	100	1500	1/2	3/8-1/2	8	186	340	330
SE300-21		10	3/8	16	12	40	100	1500	1/2	3/8	11	186	340	330
	SE350-20	10	3/8	16	17	56	100	1500	1/2	3/8-1/2	10	186	390	380
SE350-21		10	3/8	16	17	56	100	1500	1/2	3/8	14	186	390	380
	SE430-20	12	1/2	18	15	50	100	1500	1/2	1/2	14	186	460	450
SE430-22		12	1/2	18	15	50	100	1500	1/2	1/2	21	186	460	450
<b>High Pressure Hot Water 130°C</b>														
	SE430-30	10	3/8	16	18	60	200	3000	3/8	1/2	14	186	460	450
SE430-32		10	3/8	16	18	60	200	3000	3/8	3/8	22	186	460	450
<b>Medium Pressure Oil, Coolant &amp; Allied Products 130°C</b>														
Hose can be supplied on request	SE300-40	10	3/8	16	12	40	150	2175	3/8	3/8	8	186	355	365
	SE350-40	10	3/8	16	18	60	150	2175	3/8	3/8	10	186	410	400
	SE430-40	12	1/2	19	15	50	150	2175	1/2	1/2	14	186	460	450
<b>High Pressure Grease</b>														
Hose can be supplied on request	SE300-50	6	1/4	14	12	40	600	8700	3/8	3/8	8	186	355	365
	SE350-50	6	1/4	16	16	60	600	8700	3/8	3/8	10	186	410	400
	SE430-50	10	3/8	19	15	50	600	8700	3/8	1/2	14	186	460	450

Available for - fuel pg31 - welding pg32 - twin hydraulic pg33 - stainless steel pg24



## 530/540 SERIES

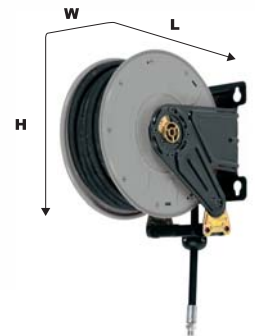
SE Range



### Medium Duty

The 530 & 540 Series are extremely durable, high quality steel hose reels that will suit hose sizes ranging from 12mm I.D. (1/2") up to 25mm I.D. (1"). Sturdy and compact, the SE Range allows the user to manage hose safely, practically and effectively. The SE Range is available with or without hose and is suitable for numerous applications.

- ▶ Full Flow Swivel
- ▶ Adjustable Guide Arm
- ▶ Enclosed Drive Spring
- ▶ Powder Coated Steel
- ▶ Easy Installation



MODELS	MODELS	I.D.		O.D.	LENGTH		PRESSURE		CONNECTION		WEIGHT	DIMENSIONS				
		with hose	without hose		mm	inch	mm	m	ft	Bar		PSI	inlet	outlet	kg	W
<b>Low Pressure Air &amp; Water</b>																
	SE530-10			12	1/2	20	25	82	20	300	1/2	1/2	19	203	560	550
SE530-12				12	1/2	20	25	82	20	300	1/2	1/2	25	203	560	550
	SE540-10			19 or 25	3/4 or 1	25 or 35	20 or 15	66 or 50	20	300	1	1	24	300	560	550
SE540-12				19	3/4	25	20	66	20	300	1	3/4	35	300	560	550
SE540-13				25	1	35	15	50	20	300	1	1	37	300	560	550
<b>Medium Pressure Hot Water 130°C</b>																
	SE530-20			12	1/2	19	25	82	100	1500	1/2	1/2	19	203	560	550
SE530-22				12	1/2	19	25	82	100	1500	1/2	1/2	32	203	560	550
	SE540-20			19 or 25	3/4 or 1	25 or 35	20 or 15	66 or 50	100	1500	1	1	24	300	560	550
SE540-23				19	3/4	25	20	66	100	1500	1	3/4	37	300	560	550
SE540-21				25	1	35	15	50	100	1500	1	1	39	300	560	550
	SE540-25			12	1/2	20	30	100	100	1500	1/2	1/2	24	300	560	550
SE540-26				12	1/2	20	30	100	100	1500	1/2	1/2	38	300	560	550
<b>High Pressure Hot Water 130°C</b>																
	SE530-30			10	3/8	18	25	82	200	3000	3/8	1/2	19	203	560	550
SE530-31				10	3/8	18	25	82	200	3000	3/8	3/8	30	203	560	550
	SE540-30			10	3/8	18	30	100	200	3000	3/8	1/2	24	300	560	550
SE540-31				10	3/8	18	30	100	200	3000	3/8	3/8	40	300	560	550
<b>Medium Pressure Oil, Coolant &amp; Allied Products 130°C</b>																
Hose can be supplied on request	SE530-40			12	1/2	19	25	82	150	2175	1/2	1/2	19	203	560	550
	SE540-40			25	1	35	15	50	150	2175	1	1	24	300	560	550
<b>High Pressure Grease</b>																
Hose can be supplied on request	SE530-50			10	3/8	18	25	82	600	8700	3/8	1/2	19	203	560	550
	SE540-50			10	3/8	18	30	100	600	8700	3/8	1/2	24	300	560	550

Available for - fuel pg31 - welding pg32 - twin hydraulic pg33 - stainless steel pg24



## 560 SERIES

SE Range



### Large Capacity

The 560 is a large capacity series of hose reels for long lengths of hose. The 560 Series is an extremely durable range of high quality steel hose reels that will suit hose sizes ranging from 10mm I.D. (3/8") up to 25mm I.D. (1"). With its sturdy design the 560 Series allows the user to manage hose safely, practically and effectively. The SE Range is available with or without hose and is suitable for numerous applications including: air, water, oils and fuels.

Consult Reelcare if you are unsure of your application, the sales department are there to help and will be more than happy to advise.

### Full Flow Swivels

Available in: Brass, steel, stainless steel AISI 304.  
Available with PU, Viton, or Teflon seals.

### Adjustable Guide Arm

Allows wall, floor and ceiling mounting.

### Easy Installation

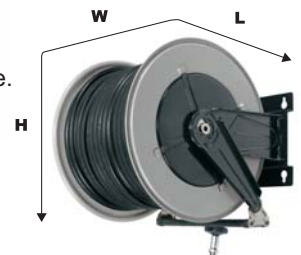
Reel comes with a mounting template.

### Powder Coated Steel

Reduces the risk of corrosion.

### Enclosed drive spring

Completely enclosed drive spring built into the reel.



MODELS	MODELS	I.D.		O.D.	LENGTH		PRESSURE		CONNECTION		WEIGHT
with hose	without hose	mm	inch	mm	m	ft	Bar	PSI	inlet	outlet	kg
<b>Low Pressure Air &amp; Water</b>											
	SE560-10	19 or 25	3/4 or 1	30 or 35	30	100	20	300	1	1	30
SE560-11		19	3/4	30	30	100	20	300	1	3/4	50
SE560-15		25	1	35	30	100	20	300	1	1	60
<b>Medium Pressure Hot Water 130°C</b>											
	SE560-20	19 or 25	3/4 or 1	30 or 35	30	100	100	1500	1	1	30
SE560-21		19	3/4	30	30	100	100	1500	1	3/4	55
SE560-25		25	1	35	30	100	100	1500	1	1	65
<b>High Pressure Hot Water 130°C</b>											
	SE560-30	10	3/8	18	50	165	200	3000	3/8	1/2	30
SE560-32		10	3/8	18	50	165	200	3000	3/8	3/8	70
<b>Medium Pressure Oil, Coolant &amp; Allied Products 130°C</b>											
Hose supplied on request	SE560-40	19 & 25	3/4 & 1	25 & 32	30	100	150	2175	1	1	30
	SE560-46	12	1/2	22	50	165	150	2175	1/2	1/2	30
<b>DIMENSIONS 560 W 488 mm L 578 mm H 522 mm</b>											

Available for fuel, oxy/acetylene, twin hydraulic and in stainless steel



## 440 SERIES

SE Range



### Steel Enclosed

The 440 Series are fully enclosed hose reels. This series is ideal for the lubrication and automotive industries. The 440 Series is extremely durable and will suit hose sizes ranging from 6mm I.D. (1/4") up to 12mm I.D. (1/2"). The 440 Series allows the user to manage hose safely, practically and effectively. They are available with or without hose and are suitable for applications including: air, water, oils and grease.

Consult Reelcare if you are unsure; the sales department are there to help and will be more than happy to advise.

### Fully Enclosed

Excellent for workshops and garages

### Full Flow Swivels

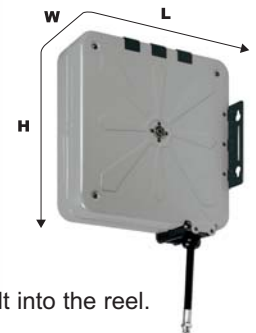
Allows maximum product delivery

### Powder Coated Steel

Reduces the risk of corrosion.

### Enclosed drive spring

Completely enclosed drive spring built into the reel.



MODELS with hose	MODELS without hose	I.D.		O.D.	LENGTH		PRESSURE		CONNECTION		WEIGHT kg
		mm	inch	mm	m	ft	Bar	PSI	inlet	outlet	
<b>Low Pressure Air &amp; Water</b>											
	SE440-10	10 or 12	3/8 or 1/2	17 or 22	18 or 15	60 or 50	20	300	1/2	1/2	24
SE440-11		12	1/2	22	15	50	20	300	1/2	1/2	28
SE440-12		10	3/8	17	12	40	20	300	1/2	3/8	27
SE440-13		10	3/8	17	18	60	20	300	1/2	3/8	29
<b>Medium Pressure Oil, Coolant &amp; Allied Products</b>											
	SE440-40	12	1/2	22	15	50	150	2175	1/2	1/2	24
SE440-41		12	1/2	22	10	33	150	2175	1/2	1/2	28
SE440-42		12	1/2	22	15	50	150	2175	1/2	1/2	29
<b>High Pressure Grease</b>											
	SE440-50	6 or 10	1/4 or 3/8	14 or 17	18 or 15	60 or 50	600	8700	3/8	1/2	24
SE440-51		6	1/4	14	12	40	600	8700	3/8	1/4	28
SE440-52		6	1/4	14	18	60	600	8700	3/8	1/4	29
SE440-55		10	3/8	17	10	33	600	8700	3/8	1/4	28
<b>DIMENSIONS 440 W 217 mm L 500 mm H 485 mm</b>											

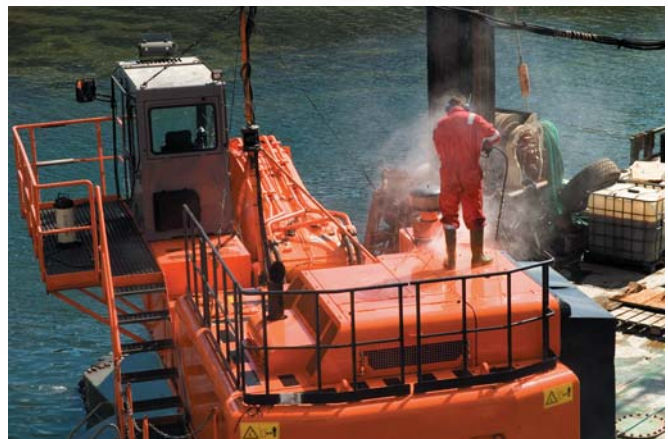


## STAINLESS STEEL SR Range



### Corrosion Resistant

Reelcare's range of high quality stainless steel hose reels will increase the life of expensive wash down, chemical, and fluid transfer hoses. By properly storing your hose on Reelcare's range of stainless steel hose reels, you will be reducing the risk of tripping accidents caused by improper hose handling. Stainless steel hose reels are ideal for food processing, pre-rinse, wash down, chemical transfer and industrial solvent handling. They are also suitable for coastal, offshore oil industry, on-board ship and other marine applications where the harsh environment of salt water spray requires the use of stainless steel hose reels.



MODELS	I.D.		O.D.	LENGTH		PRESSURE		CONNECTION	APRX WGT	DIMENSIONS		
	without hose	mm		inch	mm	m	ft			Bar	PSI	inlet
<b>Spring Rewind - Low Pressure Stainless Steel</b>												
5600 OLS70	10	3/8	18	11	35	35	500	3/8	10	152	348	368
7800 OLS70	12	1/2	21	15	50	35	500	1/2	20	178	483	514
82000 OLS70	12	1/2	21	30	100	35	500	1/2	37	267	610	645
83000 OLS70	19	3/4	31	15	50	35	500	3/4	37	267	610	645
D83000 OLS70	19	3/4	31	23	75	35	500	3/4	40	362	613	645
D84000 OLS70	25	1	35	15	50	35	500	1	40	362	613	645
D9200 OLS70	12	1/2	21	30	100	35	500	1/2	52	420	664	667
D9300 OLS70	19	3/4	31	23	75	35	500	3/4	53	420	664	667
D9400 OLS70	25	1	35	15	50	35	500	1	53	420	664	667
<b>Spring Rewind - Medium Pressure Stainless Steel</b>												
5600 OMS70	10	3/8	18	9	30	210	3000	3/8	11	152	348	368
7600 OMS55	10	3/8	19	18	60	210	3000	3/8	19	178	483	514
7800 OMS70	12	1/2	22	15	50	210	3000	1/2	21	178	483	514
82000 OMS70	12	1/2	22	23	75	104	1500	1/2	37	267	610	645
83000 OMS70	19	3/4	31	15	50	104	1500	3/4	37	267	610	645
D9300 OMS70	19	3/4	31	15	50	210	3000	3/4	54	420	664	667



## STAINLESS STEEL SE Range



MODELS	I.D.		O.D.	LENGTH		CONNECTION		WEIGHT	MODEL	APPROX WGT	DIMENSIONS			
	with hose	mm		inch	mm	m	ft				inlet	outlet	with hose	without hose
<b>Low Pressure Air &amp; Cold Water - 20 Bar</b>														
SE302-11		10	3/8	16	12	40	3/8	3/8	10	SE302-10	8	186	365	355
SE352-11		10	3/8	16	18	60	3/8	3/8	12	SE352-10	10	186	410	400
SE352-12		10	3/8	14.5	20	66	3/8	3/8	15	SE352-10	10	186	410	400
SE432-11		12	1/2	20	15	50	1/2	1/2	19	SE432-10	14	186	460	450
SE432-13		10	3/8	16	18	60	1/2	3/8	21	SE432-10	14	186	460	450
SE532-11		12	1/2	20	20	66	1/2	1/2	30	SE532-10	19	203	560	550
SE532-12		12	1/2	20	25	82	1/2	1/2	35	SE532-10	19	203	560	550
SE542-12		19	3/4	27	20	66	1/2	3/4	35	SE542-10	24	300	573	550
SE542-13		25	1	32	15	50	1	1	40	SE542-10	24	300	573	550
SE562-11		19	3/4	32	30	100	1	3/4	65	SE562-10	30	488	578	522
SE562-15		25	1	35	30	100	1	1	70	SE562-10	30	488	578	522
<b>Air, Hot Water &amp; Oil 130 °C Medium Pressure - 100 Bar</b>														
SE302-21		10	3/8	17	12	40	1/2	3/8	12	SE302-40	8	186	365	355
SE302-22		12	1/2	21	8	26	1/2	1/2	13	SE302-40	8	186	365	355
SE352-21		10	3/8	17	17	65	1/2	1/2	16	SE352-40	10	186	410	400
SE352-23		12	1/2	21	10	35	1/2	1/2	13	SE352-40	10	186	410	400
SE432-21		12	1/2	19	10	35	1/2	1/2	21	SE434-20	14	186	460	450
SE432-22		12	1/2	19	15	50	1/2	1/2	23	SE434-20	14	186	460	450
SE532-21		12	1/2	21	20	66	1/2	1/2	30	SE534-20	19	203	560	550
SE532-22		12	1/2	21	25	82	1/2	1/2	32	SE534-20	19	203	560	550
SE542-22		19	3/4	27	15	50	1	3/4	45	SE544-20	24	300	573	550
SE542-21		25	1	31	15	50	1	1	48	SE544-20	24	300	573	550
SE562-23		19	3/4	27	40	130	1	3/4	68	SE564-20	30	488	578	522
SE562-25		25	1	35	30	100	1	1	72	SE564-20	30	488	578	522
<b>Hot Water 130 °C High Pressure - 200 Bar</b>														
SE432-31		10	3/8	17	12	40	3/8	3/8	20	SE434-30	14	186	460	450
SE432-32		10	3/8	17	18	60	3/8	3/8	23	SE434-30	14	186	460	450
SE532-31		10	3/8	17	25	82	3/8	3/8	38	SE534-30	24	203	560	550
SE532-32		10	3/8	17	20	66	3/8	3/8	36	SE534-30	24	203	560	550
SE542-31		10	3/8	17	30	100	3/8	3/8	50	SE544-30	25	300	573	550
SE562-31		10	3/8	17	40	130	3/8	3/8	75	SE564-30	38	488	578	522
SE562-32		10	3/8	17	50	160	3/8	3/8	80	SE564-30	38	488	578	522

Also available for 400 Bar, please call for details